



# EAL Service Glasgow City Council

**Maria Walker**  
**Head of EAL Service**





# Workshop outline

- Glasgow context
- Some ways the EAL Service supports children and young people with EAL



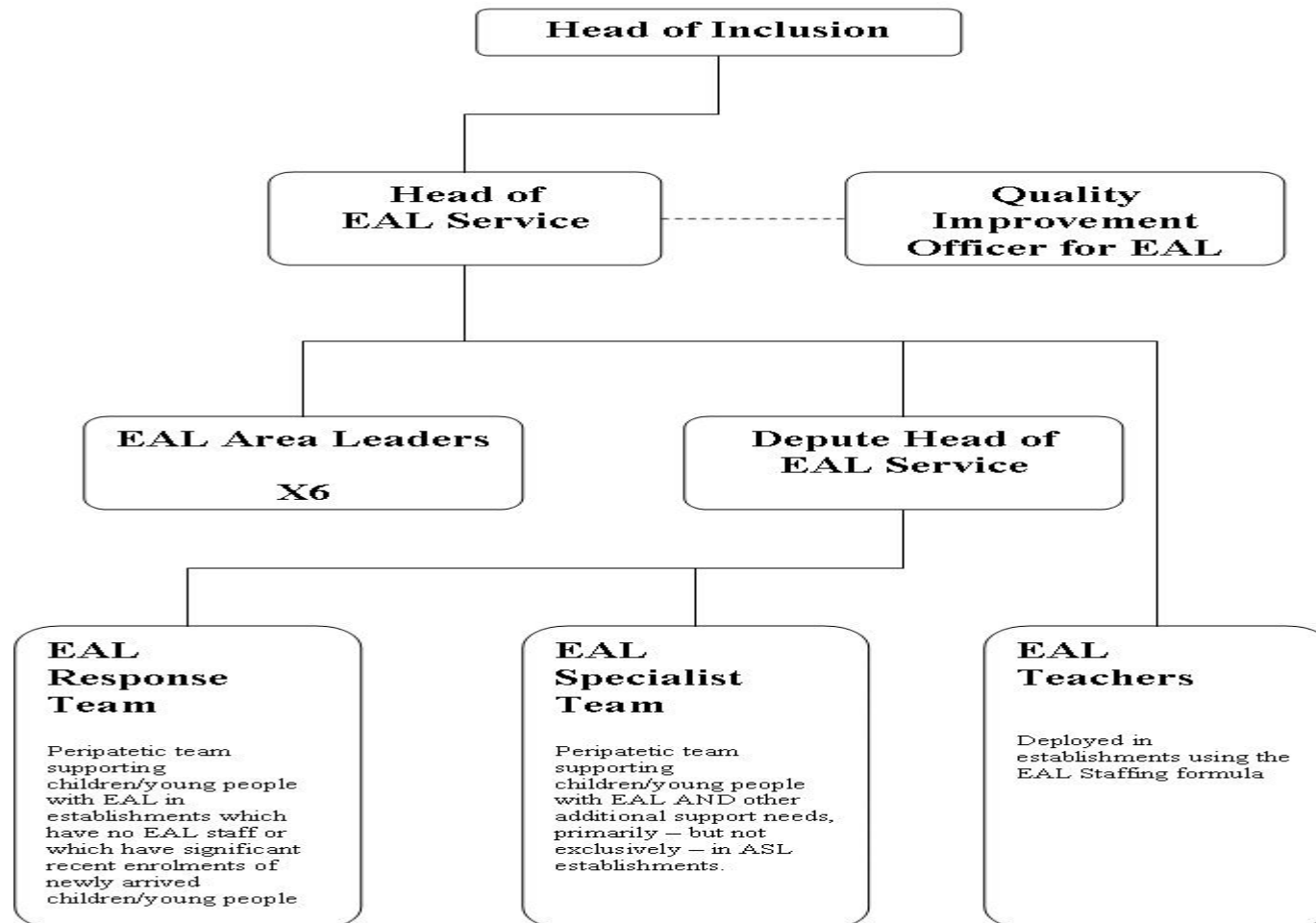


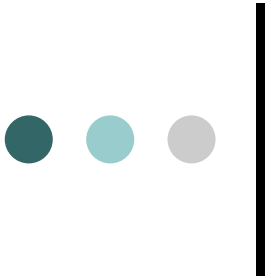
# Bilingual learners in Glasgow

- Approximately 11 700 children and young people with EAL in Glasgow - almost 16% of total citywide school roll
- established bilingual communities
- new arrivals from other countries
- asylum seekers and refugees
- European Union migrants



# EAL Service structure



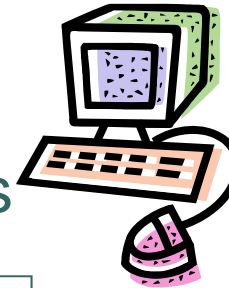


# EAL Teachers working directly with children and young people

- How to they work?
  - With a small group
  - With individuals
  - In the class, alongside the class teacher
- What do they do?

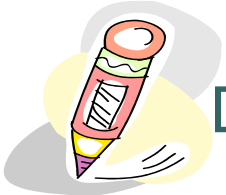
# Support Strategies

Display illustrated wordbanks and glossaries

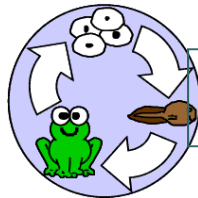


Use ICT and the internet

Draw pictures



Use key visuals



Highlight key part of sentence structure

explain, repeat and model language



Label diagrams

Use writing frames and text organisers to help with sentence and text building

Pre-teach key reading words

Use or make a bilingual picture dictionary



Develop bilingual key vocabulary lists



Use visual aids

Play loop or chain games



# Training for staff

- Probationers
- EAL Teachers
- Class/subject teachers
- School admin staff
- Pupil support assistants
- others



# Parents

Home | LearnEnglish Teens - Windows Internet Explorer provided by Mitel  
http://learnenglishteens.britishcouncil.org/

BRITISH COUNCIL LearnEnglish Teens

ENGLISH SKILLS PRACTICE GRAMMAR & VOCABULARY EXAMS FREETIME MAGAZINE

Video zone  
Do you think most computer programmers are men or women? Why do you think that is? Watch this video to find out why Facebook is trying to get more women working in technology.

Find Us On  
facebook twitter Google+

PREMIER SKILLS PS  
Combine the global languages of English and football  
Made for iPhone

Video zone 9 Games 97 Popular Videos

Sushi Spell  
How many words can you Sushi Spell in two minutes? Take the sushi from the moving belt...

Life around the world 3

Po najechniu kursorem na tę opcję, rozwiną się podtytuły. Tu znajdziecie Państwo materiały do rozwijania różnych sprawności językowych. Patrz zdjęcie A, poniżej.

Po najechniu kursorem na tę opcję rozwiną się podtytuły. Tu znajdziecie Państwo materiały do rozwijania gramatyki i słownictwa. Patrz zdjęcie B, poniżej.







# Online support

- Glasgow Online
- EAL Wiki





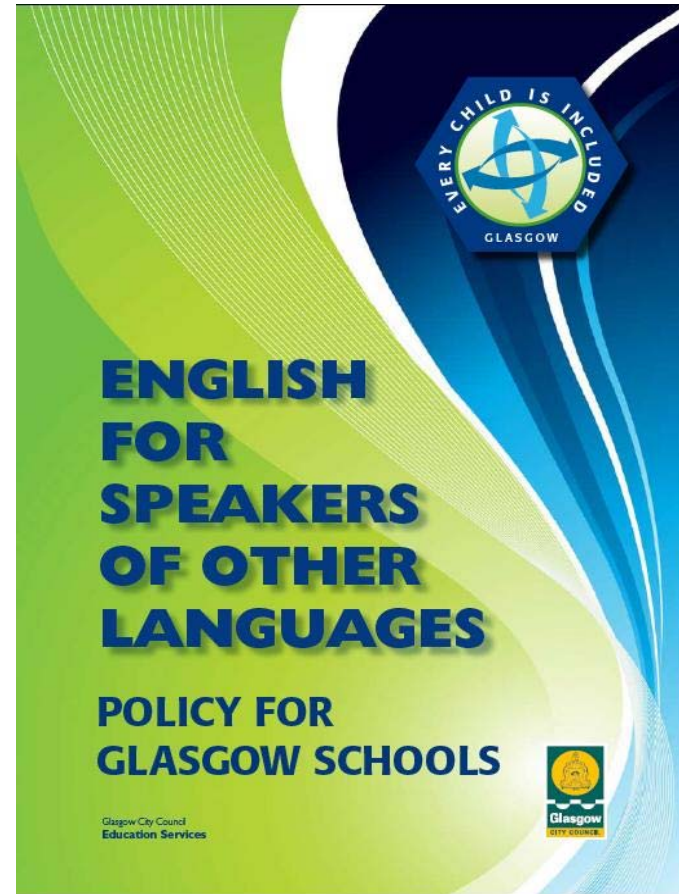
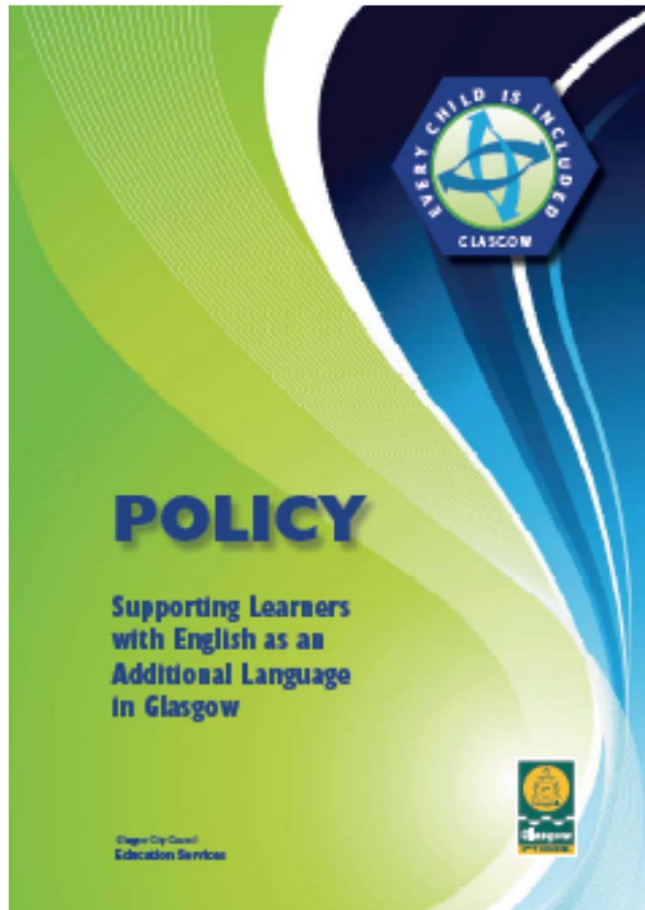
# Corporate/national work

- Contribute to aspects of developments within education
  - International education
  - Languages 1+2
  - Literacy
  - Additional Support Needs
- Work with other partners
  - HMIE
  - SQA
  - Universities





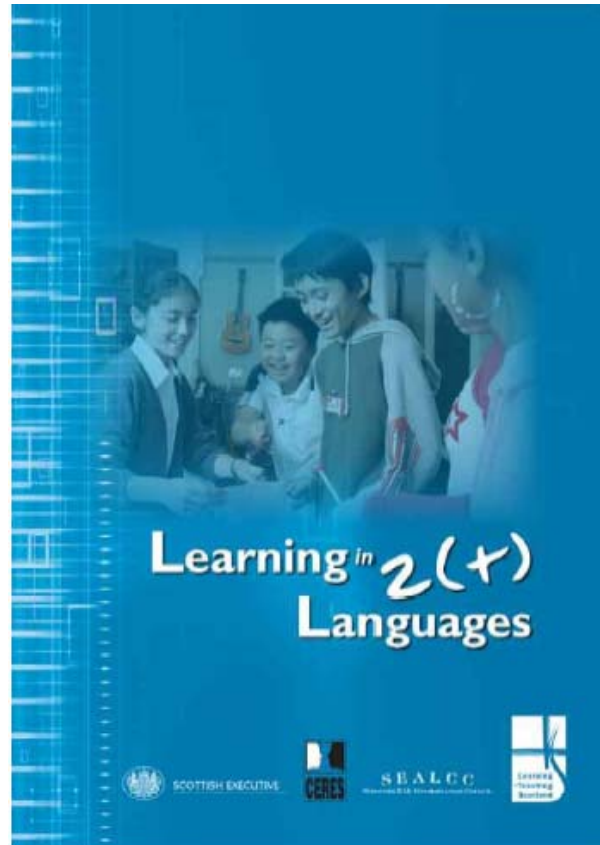
# Glasgow City Council Policies



[www.glasgow.gov.uk](http://www.glasgow.gov.uk)



# Learning in 2+ Languages



[www.educationscotland.gov.uk](http://www.educationscotland.gov.uk)



How good is our school?

Inclusion and Equality

Part 4: Evaluating educational provision for bilingual learners



[www.educationscotland.gov.uk](http://www.educationscotland.gov.uk)